

Ubly Schools
ACCEPTING BIDS:

Preschool Building Cabinets

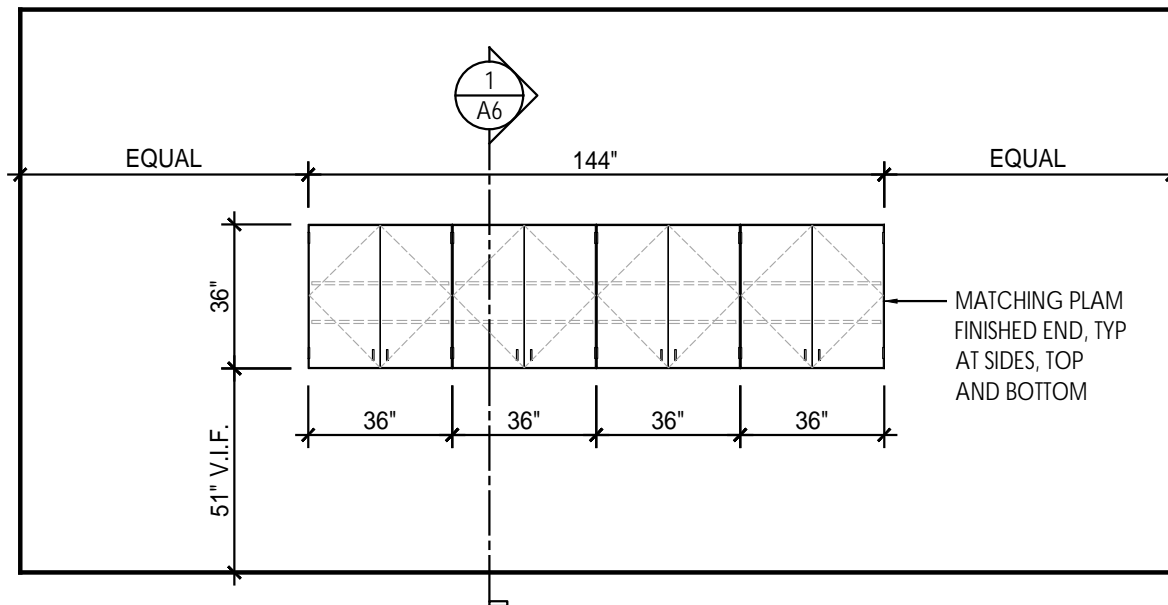
Drawings and Specifications attached.

Due: Noon - Friday June 13th

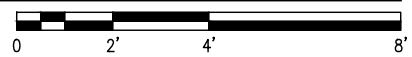
Please submit your bid to:

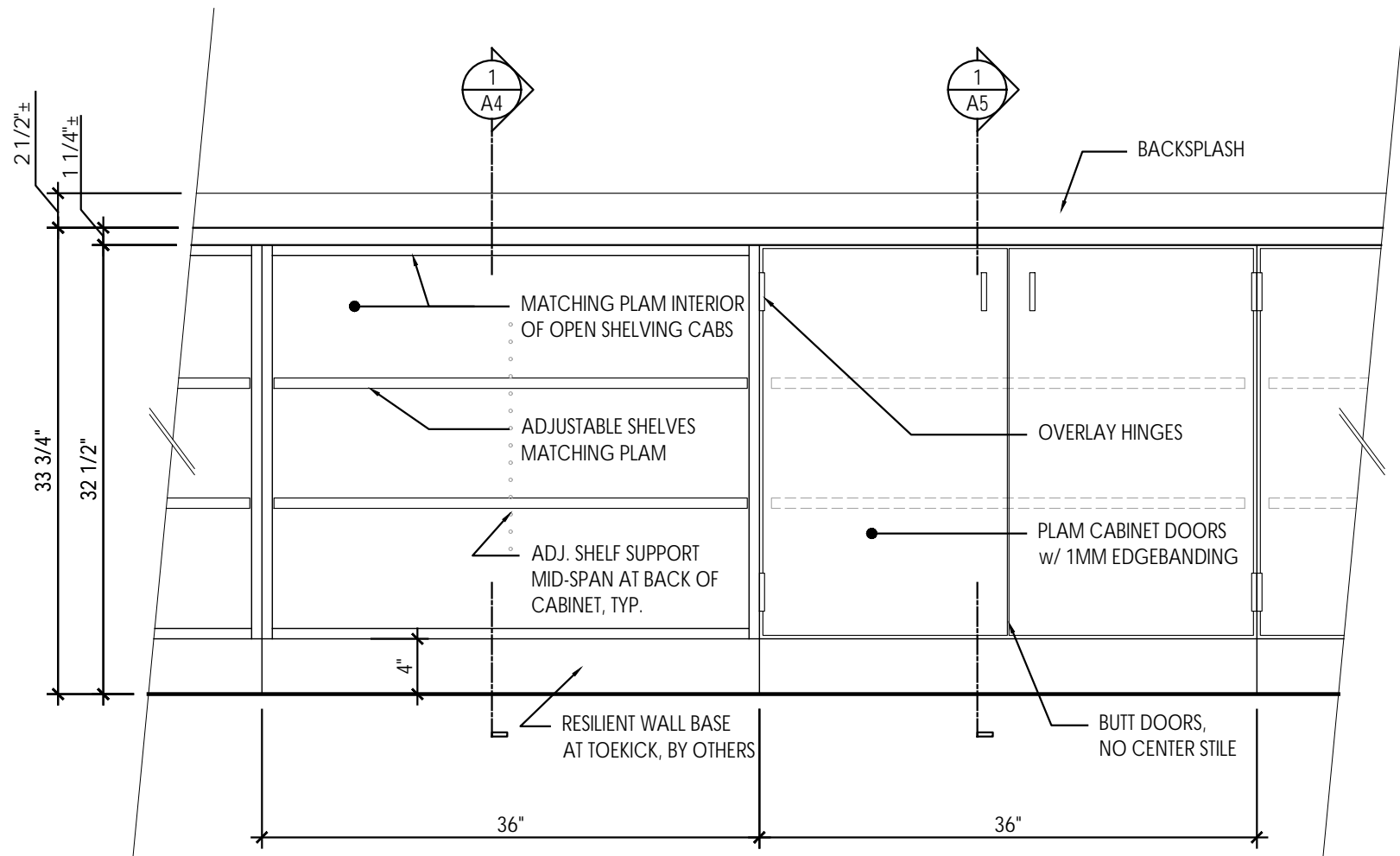
Tom Volmering, Ubly Community Schools,
2020 Union Street, Ubly, MI 48475

tomvolmering@ublyschools.org



1 BACK WALL CABINETRY
SCALE: 1/4" = 1'-0"





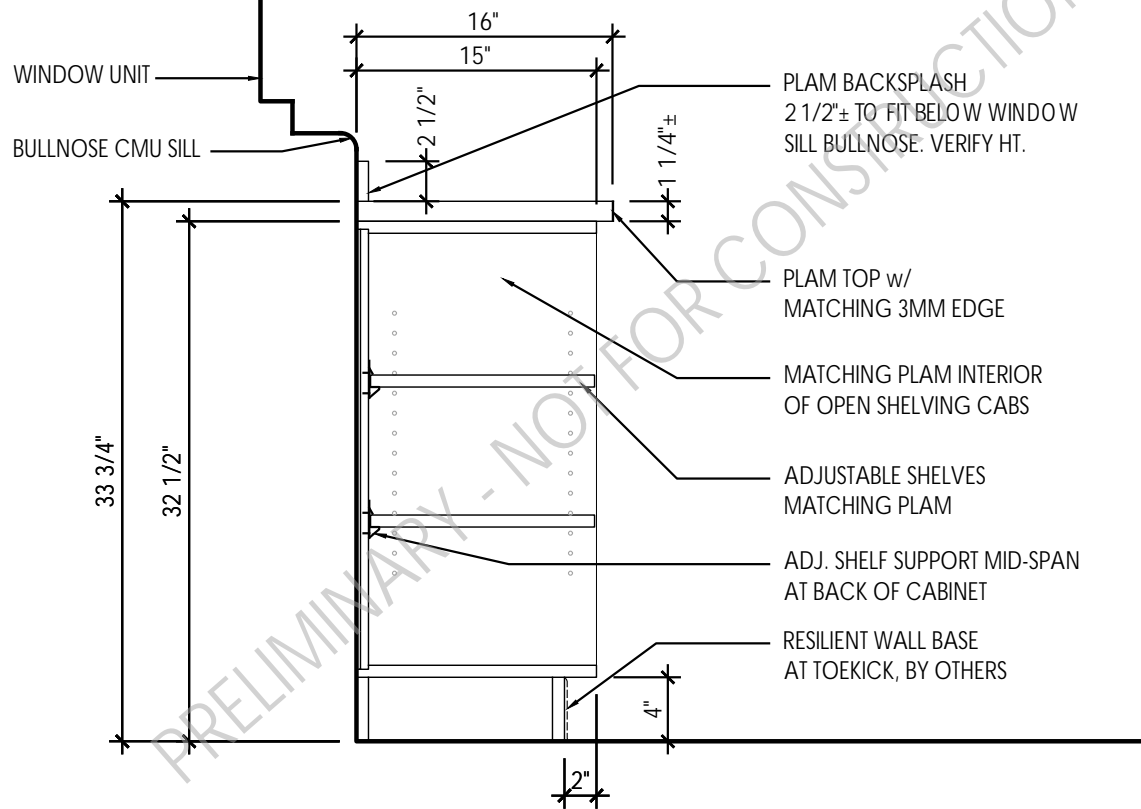
1 LOWER CABINET PARTIAL ELEV
SCALE: 1" = 1'-0"

BOOMS DESIGN & ENGINEERING, PLC

UBLY PRESCHOOL & LATCHKEY CENTER

PRELIMINARY CASEWORK DRAWINGS
5/28/2025 - ISSUED FOR REVIEW

A3



1

LOWER CABINET OPEN SHELVING

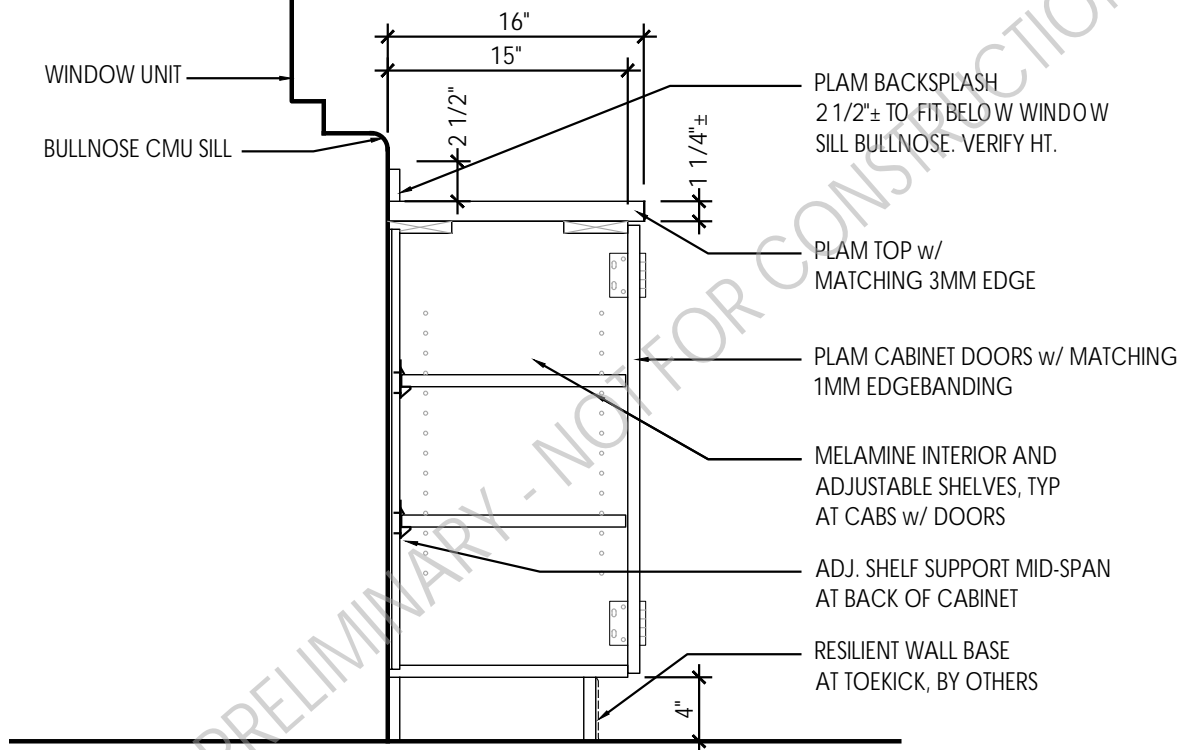
SCALE: 1" = 1'-0"

BOOMS DESIGN & ENGINEERING, PLC

UBLY PRESCHOOL & LATCHKEY CENTER

PRELIMINARY CASEWORK DRAWINGS
5/28/2025 - ISSUED FOR REVIEW

A4



1

LOWER CABINET WITH DOORS

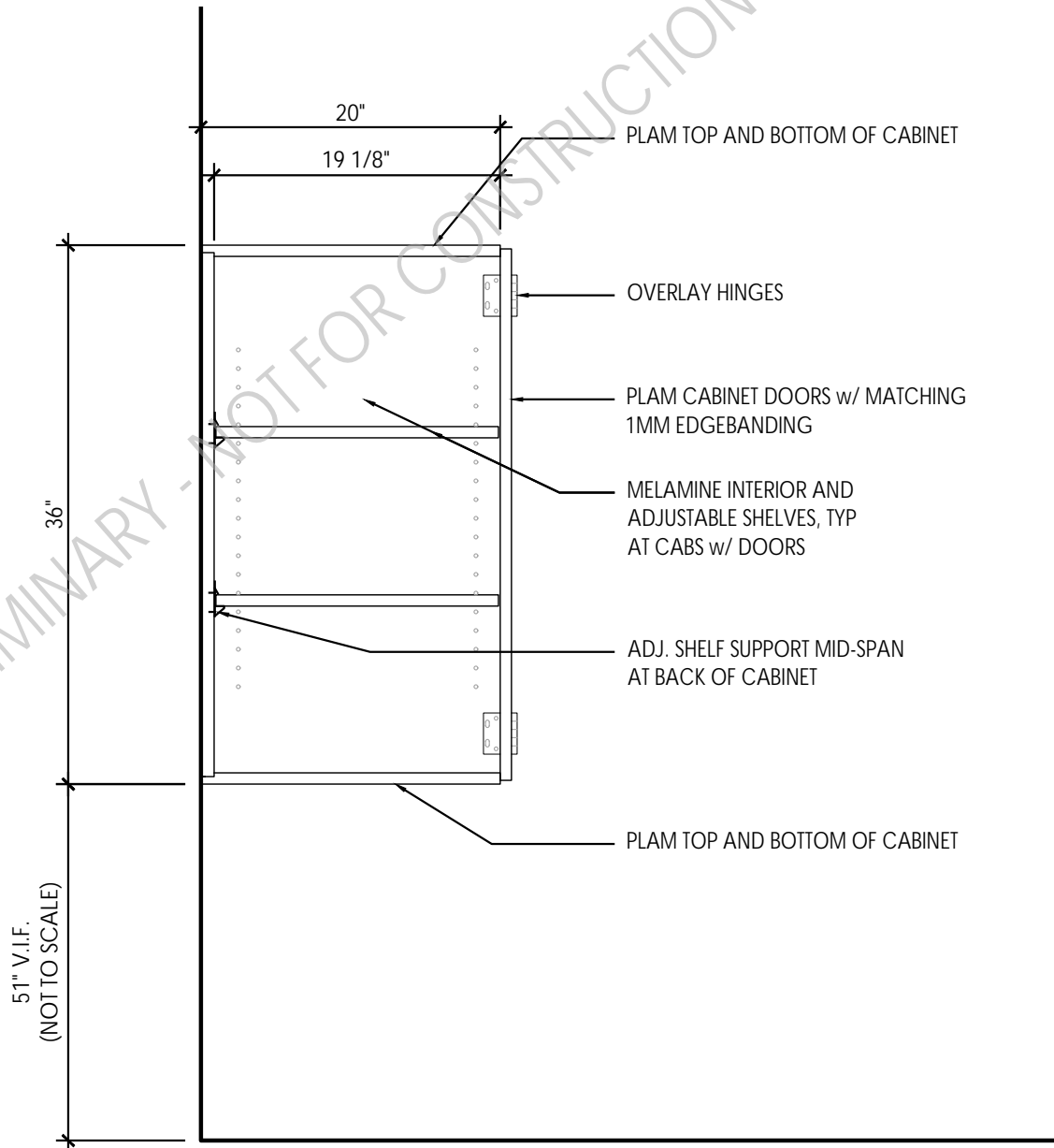
SCALE: 1" = 1'-0"

BOOMS DESIGN & ENGINEERING, PLC

UBLY PRESCHOOL & LATCHKEY CENTER

PRELIMINARY CASEWORK DRAWINGS
5/28/2025 - ISSUED FOR REVIEW

A5



UPPER CABINET WITH DOORS

1

SCALE: 1" = 1'-0"

BOOMS DESIGN & ENGINEERING, PLC

UBLY PRESCHOOL & LATCHKEY CENTER

PRELIMINARY CASEWORK DRAWINGS
5/28/2025 - ISSUED FOR REVIEW

A6